



Food Freezers

Safety Instructions 2-4

Operating Instructions

Care and Cleaning 8, 9

Defrosting Instructions
(for Manual Defrost Models) 7

Features 5, 6

Starting the Freezer 5

Installation Instructions

Preparing to Install the Freezer 10

Troubleshooting Tips 11, 12

Normal Operating
Characteristics 11

Consumer Support

Consumer Support Back Cover

Product Registration 13, 14

Warranty 15

Owner's Manual & Installation Instructions

- Upright—Manual Defrost Models:*
- FUM5
- Chest—Manual Defrost Models:*
- FCM7
FCM15
FCM25

Model number: _____

Serial number: _____

You can find them on a plate on the back of the freezer.



IMPORTANT SAFETY INFORMATION. READ ALL INSTRUCTIONS BEFORE USING.

⚠ WARNING!

Use this appliance only for its intended purpose as described in this Owner's Manual.

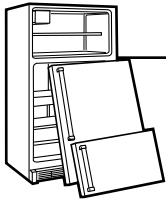


SAFETY PRECAUTIONS

When using electrical appliances, basic safety precautions should be followed, including the following:

- This freezer must be properly installed and located in accordance with the Installation Instructions before it is used.
 - Do not allow children to climb, stand or hang on the shelves in the freezer. They could damage the freezer and seriously injure themselves.
 - After your freezer is in operation, do not touch the cold surfaces, particularly when hands are damp or wet. Skin may stick to these extremely cold surfaces.
 - Do not store or use gasoline or other flammable vapors and liquids in the vicinity of this or any other appliance.
 - Unplug the freezer before cleaning, making repairs or changing the light bulb.
 - Turning the control to the **0 (off)** position does not remove power to the light circuit on models with interior light.
 - Do not refreeze frozen foods which have thawed completely.
 - The maximum amount of food your freezer is designed to freeze at one time is approximately 3 pounds (1.5 kg) per cubic foot of freezer capacity. In normal position, your freezer's temperature control will maintain sufficiently low temperatures in the freezer to freeze recommended quantities of food.
 - Caution should be used when removing the door of a freezer. Particular caution should be used when removing the lid of a Chest freezer, as most Chest freezer lids are under spring tension. Contact the manufacturer's representative for a method of safe removal.
- NOTE:** We strongly recommend that any servicing be performed by a qualified individual.

⚠ DANGER! RISK OF CHILD ENTRAPMENT



PROPER DISPOSAL OF THE FREEZER

When using electrical appliances, basic safety precautions should be followed, including the following:

Child entrapment and suffocation are not problems of the past. Junked or abandoned refrigerators and freezers are still dangerous...even if they will sit for "just a few days." If you are getting rid of your old refrigerator or freezer, please follow the instructions below to help prevent accidents.

Before You Throw Away Your Old Refrigerator or Freezer:

- Take off the doors.
- Leave the shelves in place so that children may not easily climb inside.

Refrigerants

All refrigeration products contain refrigerants, which under federal law must be removed prior to product disposal. If you are getting rid of an old refrigeration product, check with the company handling the disposal about what to do.



USE OF EXTENSION CORDS

Because of potential safety hazards under certain conditions, we strongly recommend against the use of an extension cord.

However, if you must use an extension cord, it is absolutely necessary that it be a UL-listed (in the United States) or a CSA-listed (in Canada), 3-wire grounding type appliance extension cord having a grounding type plug and outlet and that the electrical rating of the cord be 15 amperes (minimum) and 120 volts.

IMPORTANT SAFETY INFORMATION. READ ALL INSTRUCTIONS BEFORE USING.

Safety Instructions

⚠ WARNING!



HOW TO CONNECT ELECTRICITY

Do not, under any circumstances, cut or remove the third (ground) prong from the power cord. For personal safety, this appliance must be properly grounded.

The power cord of this appliance is equipped with a 3-prong (grounding) plug which mates with a standard 3-prong (grounding) wall outlet to minimize the possibility of electric shock hazard from this appliance.

Have the wall outlet and circuit checked by a qualified electrician to make sure the outlet is properly grounded.

If the outlet is a standard 2-prong wall outlet, it is your personal responsibility and obligation to have it replaced with a properly grounded 3-prong wall outlet.

The freezer should always be plugged into its own individual electrical outlet which has a voltage rating that matches the rating plate.

This provides the best performance and also prevents overloading house wiring circuits which could cause a fire hazard from overheated wires.

Never unplug your freezer by pulling on the power cord. Always grip plug firmly and pull straight out from the outlet.

Repair or replace immediately all power cords that have become frayed or otherwise damaged. Do not use a cord that shows cracks or abrasion damage along its length or at either end.

When moving the freezer away from the wall, be careful not to roll over or damage the power cord.

Operating Instructions

Installation Instructions



USE OF ADAPTER PLUGS *(Adapter plugs not permitted in Canada)*

Because of potential safety hazards under certain conditions, we strongly recommend against the use of an adapter plug.

However, if you must use an adapter, where local codes permit, a **temporary connection** may be made to a properly grounded 2-prong wall outlet by use of a UL-listed adapter available at most local hardware stores.

The larger slot in the adapter must be aligned with the larger slot in the wall outlet to provide proper polarity in the connection of the power cord.

When disconnecting the power cord from the adapter, always hold the adapter in place with one hand while pulling the power cord plug with the other hand. If this is not done, the adapter ground terminal is very likely to break with repeated use.

If the adapter ground terminal breaks, **DO NOT USE** the freezer until a proper ground has been established.

Attaching the adapter ground terminal to a wall outlet cover screw does not ground the appliance unless the cover screw is metal, and not insulated, and the wall outlet is grounded through the house wiring. You should have the circuit checked by a qualified electrician to make sure the outlet is properly grounded.

Troubleshooting Tips

Consumer Support



**READ AND FOLLOW THIS SAFETY INFORMATION CAREFULLY.
SAVE THESE INSTRUCTIONS**



Starting the Freezer

- 1 Clean the inside of the freezer with a mild solution of baking soda and water (see *Care and Cleaning*).
- 2 Connect cord to power outlet.
- 3 Make sure the temperature control is set at **4**.
- 4 Allow freezer to operate for at least four hours before placing food inside.

NOTE: It is normal for the freezer exterior to feel warm as the refrigeration system transfers heat from the inside to the outside through the exterior cabinet walls.

Temperature Control

Freezing temperature selection is made by setting the control from **1** to **7** (coldest).

If you want colder or warmer temperatures, adjust the control one step at a time.

Allow several hours after each one-step adjustment for the freezer temperature to stabilize.

Turning the control to **0 (off)** stops the cooling process but does not shut off power to the freezer.

About the operation of your freezer.

Power-On Light *(on some models)*

The Power-On Light indicates that the freezer is properly connected to the electrical power.

The light glows even when the temperature control is turned **0 (off)**.

Key-Ejecting Lock *(on some models)*

The key for the spring-loaded lock is automatically ejected—key will not remain in lock in either the open or closed position.

Keep the key out of reach of children and away from the freezer.

Refrigerated Cabinet Shelves *(on some models)*

These shelves contain cooling coils to freeze foods quickly and allow cold air to constantly circulate throughout the freezer.

Do not touch cold shelves, particularly when hands are damp or wet.

In most climates, defrosting will be necessary only about twice a year.

To have your freezer operate most efficiently, do not permit more than 1/2" (13 mm) of frost to accumulate on the shelves or walls.

To remove frost, scrape with a plastic or wood spatula or scraper.

Do not use an ice pick or sharp-edged instrument as it may damage or scratch the freezer.

Do not use any electrical device in defrosting your freezer.

For Complete Defrosting

- 1 Turn the temperature control to **0 (off)** and unplug the freezer.
- 2 Remove all food and place it in corrugated boxes, insulated bags, picnic coolers, etc. Use towels and newspapers for insulation as needed.
- 3 With the door/lid open, use pans of hot water to speed loosening of frost. Remove large pieces before they melt.
- 4 **a.** On models without a defrost drain, place towels or newspapers on the freezer bottom to catch the frost. The frost will loosen and fall. Remove towels and/or newspapers.
b. Chest models have a defrost water drain at the front and a hose adapter that is packaged in a bag in the bottom of the freezer. Remove the drain cap on the front of the freezer, insert the hose connector and attach the hose. Remove the drain plug inside the cabinet.
- 5 Sponge excess water from the bottom of the freezer as it collects to prevent overflowing.
- 6 After defrosting, clean the inside of the freezer (see *Care and Cleaning*).
- 7 On Chest models, replace the drain plug inside the cabinet and the cap on the defrost drain. Fold over and dry the gasket on the hinge side of the lid.
- 8 Plug in the freezer. Return the temperature control to its previous position and return food to the freezer.

NOTE: Water may drip from the back flange of the lid cover during defrosting. This is normal. Ice builds up in the lid insulation when the lid is open for adding or removing food, and melts during the defrosting operation.

Care and cleaning of the freezer.

Cleaning Your Freezer

■ **Outside.** Protect the paint finish. The finish on the outside of the freezer is a high quality, baked-on paint finish. With proper care, it will stay new-looking and rust-free for years. Apply a coat of appliance polish wax when the freezer is new and then at least twice a year. Appliance polish wax also works well to remove tape residue from freezer surfaces.

Keep the finish clean. Wipe with a clean cloth lightly dampened with appliance polish wax or mild liquid dishwashing detergent. Dry and polish with a clean, soft cloth. Do not wipe the freezer with a soiled dishwashing cloth or wet towel. Do not use scouring pads, powdered cleaners, bleach, or cleaners containing bleach.

CAUTION: Care should be taken in moving the freezer away from the wall. All types of floor coverings can be damaged, particularly cushioned coverings and those with embossed surfaces.

■ **Inside.** Clean the inside of your freezer at least once a year. We recommend that the freezer be unplugged before cleaning. If this is not practical, wring excess moisture out of sponge or cloth when cleaning in the vicinity of switches, lights or controls.

Use warm water and baking soda solution—about a tablespoon of baking soda to a quart of water. Rinse thoroughly with water and wipe dry. Do not use cleaning powders or other abrasive cleaners.

An open box of baking soda in the freezer will absorb stale freezer odors. Change the box every three months.

To Remove the Freezer Door (on Upright models)

- 1 Remove the plastic hinge cover by lifting it off.
- 2 Remove the screws holding the hinge to the top of the cabinet using a screwdriver.
- 3 Remove the top hinge from the cabinet and lift the door up and off the lower hinge pin. Set the door aside.

To replace the doors, reverse the order of the above instructions.

CAUTION: It is very important that all hinge screws are securely tightened to ensure a secure assembly and prevent hinge slippage.

In Case of Extended Power Failure

- Keep freezer door/lid closed. Your freezer will keep food frozen for 24 hours provided warm air is not admitted.
- If freezer is out of operation for 24 hours or more, add dry ice. Leave ice in large pieces. Add more ice as required.

WARNING: Handling of dry ice can cause freezing of the hands—gloves or other protection is recommended.

- If dry ice is not available, move food to a frozen food locker temporarily—until power is restored.

Preparing to Move

Disconnect the power cord plug from the wall outlet. Remove foods, defrost (on Manual Defrost models), clean and dry the freezer.

Secure all loose items such as grille and shelves by taping them securely in place to prevent damage.

Be sure freezer stays in upright position during actual moving and in van. The freezer must be secured in van to prevent movement. Protect outside of freezer with blanket.

Preparing for Vacation

To maintain freezer in operation during vacations, be sure your house power is not turned off. For sure protection of freezer contents, you may want to ask a neighbor to check the power supply and freezer operation every 48 hours.

For extended vacations or absences, you may prefer to move your frozen foods to a storage locker temporarily. If your freezer is to be left empty, disconnect power cord plug from wall outlet. To prevent formation of odors, place open box of baking soda in freezer and leave freezer door/lid open.

When the freezer is not operating, it can be left in an unheated house or room without damage to cabinet or mechanism.

Preparing to install the freezer.

Read these instructions completely and carefully.



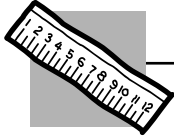
Freezer Location

Your freezer should be conveniently located for day-to-day use in a dry, well-ventilated room.

Do not install the freezer where the temperature will go below 0° F or above 110° F, because it will not maintain proper temperatures.

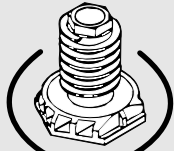
Be sure to install your freezer on a floor strong enough to support it when it is fully loaded.

The freezer must be solidly positioned on the floor if it is to function at its best. Shims may be used to accomplish this wherever the floor is too uneven. If the place selected for the freezer is damp or moist, place 2 X 4's (51 mm X 102 mm) under its entire length to assure adequate support.



Clearances

On all models, allow 3" (76 mm) on top, back and sides for proper air circulation.



Turn right
to lower

Turn left
to raise

Adjustable Legs (on Upright models)

Legs at the front corners of the freezer should be set so the freezer is firmly positioned on the floor, and the front is raised just enough so the door closes easily when opened about halfway.



These things are normal and do not indicate a need for service.

- A warm cabinet exterior as the refrigeration system transfers heat from the inside to the outside through the exterior cabinet walls.
- The sound of the high-efficiency compressor motor.

Before you call for service...



Troubleshooting Tips
Save time and money! Review the charts on the following pages first and you may not need to call for service.

Problem	Possible Causes	What To Do
Freezer does not operate or Power-On Light is not on	Temperature control in 0 (off) position.	• Move the control to a temperature setting.
	Freezer is unplugged.	• Push the plug completely into the outlet.
	The fuse is blown/circuit breaker is tripped.	• Replace fuse or reset the breaker.
Freezer starts/stops too frequently	Door/lid left open.	• Check to see if package is holding door/lid open.
	Too frequent or too long door/lid openings.	
	Temperature control set too cold.	• See <i>About the operation of your freezer.</i>
Freezer operates too long	Door/lid left open.	• Check to see if package is holding door/lid open.
	Too frequent or too long door/lid openings.	
	Temperature control set too cold.	• See <i>About the operation of your freezer.</i>
	Inadequate air circulation space around cabinet.	• See <i>Preparing to install the freezer.</i>
Noisy operation or cabinet vibrates	Floor may be weak, causing freezer to vibrate when compressor is on.	• Placing 2 X 4's (51 mm X 102 mm) under the length of the freezer will help support it and may reduce vibration.
	Cabinet is not positioned solidly on floor.	• Adjust legs (on Upright models). See <i>Preparing to install the freezer.</i> Or use shims for uneven floor.
Freezer temperature too warm	Door/lid left open.	• Check to see if package is holding door/lid open.
	Too frequent or too long door/lid openings.	
Freezer exterior feels warm	Refrigeration system transferring heat from the inside to the outside through the exterior cabinet walls.	• This is normal.

Before you call for service...

Problem	Possible Causes	What To Do
Foods defrosting	Temperature control in 0 (off) position.	• Move the control to a temperature setting.
	Freezer is unplugged.	• Push the plug completely into the outlet.
	The fuse is blown/circuit breaker is tripped.	• Replace fuse or reset the breaker.
	Door/lid left open.	• Check to see if package is holding door/lid open.
	Too frequent or too long door/lid openings.	
Freezer temperature too cold	Temperature control set too cold.	• See <i>About the operation of your freezer.</i>
Moisture forms on outside of cabinet	Not unusual during periods of high humidity.	• Wipe surface dry.
Interior light does not work (on some models)	No power at outlet.	• Replace fuse or reset the breaker.
	Freezer is unplugged.	• Push the plug completely into the outlet.
	Light bulb burned out.	• Replace bulb.
Door/lid won't fully close by itself	Legs need adjusting.	• See <i>Preparing to install the freezer.</i>
	Package holding door/lid open.	
Slow starting time after being off	Built-in overload protection.	
Excessive frost buildup	Door/lid left open.	• Check to see if package is holding door/lid open.
	Too frequent or too long door/lid openings.	
	Not unusual during periods of high humidity.	

GE Service Protection Plus™

GE, a name recognized worldwide for quality and dependability, offers you Service Protection Plus™—comprehensive protection on all your appliances—**No Matter What Brand!**

Benefits Include:

- Backed by GE
- All brands covered
- Unlimited service calls
- All parts and labor costs included
- No out-of-pocket expenses
- No hidden deductibles
- One 800 number to call

***We'll Cover Any Appliance.
Anywhere. Anytime.****

You will be completely satisfied with our service protection or you may request your money back on the remaining value of your contract. No questions asked. It's that simple.

Protect your refrigerator, dishwasher, washer and dryer, range, TV, VCR and much more—**any brand!** Plus there's no extra charge for emergency service and low monthly financing is available. Even icemaker coverage and food spoilage protection is offered. You can rest easy, knowing that all your valuable household products are protected against expensive repairs.

Place your confidence in GE and call us in the U.S. toll-free at **800.626.2224** for more information.

*All brands covered, up to 20 years old, in the continental U.S.



Please place in envelope and mail to:

General Electric Company
Warranty Registration Department
P.O. Box 32150
Louisville, KY 40232-2150

Consumer Product Ownership Registration

Dear Customer:

Thank you for purchasing our product and thank you for placing your confidence in us.

We are proud to have you as a customer!

Follow these three steps to protect your new appliance investment:

1

Complete and mail your Consumer Product Ownership Registration today. Have the peace of mind of knowing we can contact you in the unlikely event of a safety modification.

2

After mailing the registration below, store this document in a safe place. It contains information you will need should you require service. Our service number is 800.GE.CARES (800.432.2737).

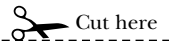
3

Read your Owner's Manual carefully. It will help you operate your new appliance properly.

Model Number

Serial Number

Important: If you did not get a registration card with your product, detach and return the form below to ensure that your product is registered, or register online at www.GEAppliances.com.



Consumer Product Ownership Registration



Model Number

Serial Number

Mr. Ms. Mrs. Miss

First Name

Last Name

Street Address

Apt. #

E-mail Address*

City

State

Zip Code

Date Placed In Use Month

Day

Year

Phone Number --



GE Appliances

GE Consumer Products
General Electric Company
Louisville, Kentucky
www.GEAppliances.com

* Please provide your e-mail address to receive, via e-mail, discounts, special offers and other important communications from GE Appliances (GEA).

Check here if you do not want to receive communications from GEA's carefully selected partners.

FAILURE TO COMPLETE AND RETURN THIS CARD DOES NOT DIMINISH YOUR WARRANTY RIGHTS.

For information about GEA's privacy and data usage policy, go to www.GEAppliances.com and click on "Privacy Policy" or call 800.626.2224.

Freezer Warranty.



All warranty service provided by our Factory Service Centers, or an authorized Customer Care[®] technician. To schedule service, on-line, 24 hours a day, visit us at www.GEAppliances.com, or call 800.GE.CARES (U.S.), 1.800.361.3400 (Canada).

Staple your receipt here.
Proof of the original purchase date is needed to obtain service under the warranty.

For The Period Of: GE Will Replace:

One Year
From the date of the original purchase

Any part of the freezer which fails due to a defect in materials or workmanship. During this **full one-year warranty**, GE will also provide, **free of charge**, all labor and in-home service to replace the defective part.

Five Years
From the date of the original purchase

Any part of the sealed refrigerating system (the compressor, condenser, evaporator and all connecting tubing) which fails due to a defect in materials or workmanship. During this **additional four-year limited warranty**, GE will also provide, **free of charge**, all labor and in-home service to replace the defective part.

One or Five Years
From the date of the original purchase (Limited warranty)

Food which has spoiled because of a manufacturing defect either in: a) any part of the freezer within one year from the date of original purchase, or b) any part of the sealed refrigerating system within five years from the date of original purchase. **Not to exceed the cumulative limit specified below.**

Freezer Capacity	Cumulative Limit
14.9 cu. ft. and smaller	\$100.00
15.0 cu. ft. and larger	\$150.00

Within 30 days after food spoilage occurs, you must provide satisfactory proof of the spoilage to a Factory Service Center, an authorized Customer Care[®] servicer or the dealer from whom the freezer was purchased.

What GE Will Not Cover:

- Service trips to your home to teach you how to use the product.
- Improper installation, delivery or maintenance.
- Failure of the product if it is abused, misused, or used for other than the intended purpose or used commercially.
- Food spoilage caused by:
 - a) Power interruption from the utility.
 - b) Blown fuse, open circuit breaker or other power disconnection on the owner's premises.
 - c) Freezer not operating because of abnormally low electric power voltage or inadequate house wiring.
- Damage caused after delivery.
- Replacement of house fuses or resetting of circuit breakers.
- Damage to the product caused by accident, fire, floods or acts of God.
- Incidental or consequential damage caused by possible defects with this appliance.

This warranty is extended to the original purchaser and any succeeding owner for products purchased for home use within the USA and Canada. In Alaska, the warranty excludes the cost of shipping or service calls to your home.

Some states do not allow the exclusion or limitation of incidental or consequential damages. This warranty gives you specific legal rights, and you may also have other rights which vary from state to state. To know what your legal rights are, consult your local or state consumer affairs office or your state's Attorney General.

**Warrantor: General Electric Company, Louisville, KY 40225
Camco Inc., Suite 310, 1 Factory Lane, Moncton, N.B. E1C 9M3**

Consumer Support.



GE Appliances Website

www.GEAppliances.com

Have a question or need assistance with your appliance? Try the GE Appliances Website 24 hours a day, any day of the year! For greater convenience and faster service, you can now download Owner's Manuals, order parts, catalogs, or even schedule service on-line. You can also "Ask Our Team of Experts™" your questions, and so much more...



Schedule Service

www.GEAppliances.com

Expert GE repair service is only one step away from your door. Get on-line and schedule your service at your convenience 24 hours any day of the year! Or call 800.GE.CARES (800.432.2737) during normal business hours.



Real Life Design Studio

www.GEAppliances.com

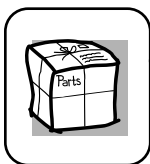
GE supports the Universal Design concept—products, services and environments that can be used by people of all ages, sizes and capabilities. We recognize the need to design for a wide range of physical and mental abilities and impairments. For details of GE's Universal Design applications, including kitchen design ideas for people with disabilities, check out our Website today. For the hearing impaired, please call 800.TDD.GEAC (800.833.4322).



Extended Warranties

www.GEAppliances.com

Purchase a GE extended warranty and learn about special discounts that are available while your warranty is still in effect. You can purchase it on-line anytime, or call 800.626.2224 during normal business hours. GE Consumer Home Services will still be there after your warranty expires.

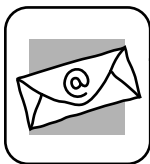


Parts and Accessories

www.GEAppliances.com

Individuals qualified to service their own appliances can have parts or accessories sent directly to their homes (VISA, MasterCard and Discover cards are accepted). Order on-line today, 24 hours every day or by phone at 800.626.2002 during normal business hours.

Instructions contained in this manual cover procedures to be performed by any user. Other servicing generally should be referred to qualified service personnel. Caution must be exercised, since improper servicing may cause unsafe operation.



Contact Us

www.GEAppliances.com

If you are not satisfied with the service you receive from GE, contact us on our Website with all the details including your phone number, or write to: General Manager, Customer Relations
GE Appliances, Appliance Park
Louisville, KY 40225



Register Your Appliance

www.GEAppliances.com

Register your new appliance on-line—at your convenience! Timely product registration will allow for enhanced communication and prompt service under the terms of your warranty, should the need arise. You may also mail in the pre-printed registration card included in the packing material.